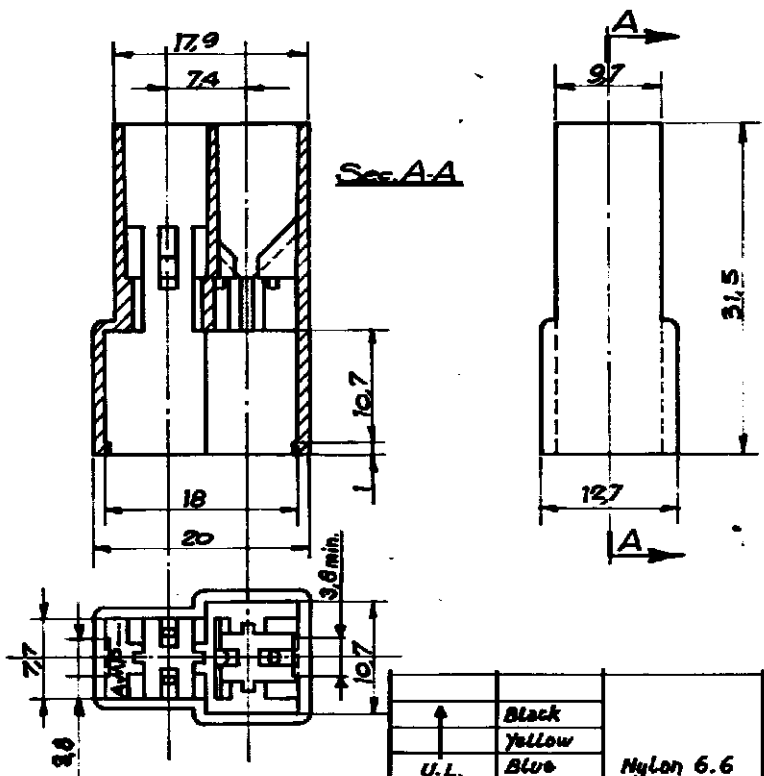


NUMBER  
C-180908



↑	Black	Nylon 6.6 Zytel 101L	1-180908-5
	Yellow		1-180908-4
U.L. Approved	Blue		1-180908-3
	Green		1-180908-2
	Red		1-180908-1
↓	Natural		1-180908-0
↔	BLACK	Polyamide 6.6	180908-5
↔	YELLOW		180908-4
↔	BLUE		180908-3
↔	GREEN		180908-2
↔	RED		180908-1
↔	NATURAL		180908-0
NOTES	COLOUR	MATERIAL	PART NUMBER

DIMENSIONS IN MM. DO NOT SCALE PRINT

REV	DESCRIPTION	BY	DATE
L	Revised	R.M.	8-5-76
K	Added Both Numbers U.L. Approved.	CB.	10-2-80
J	Revised	CB.	9-9-83
H	ADDED YELLOW/BLUE	CB.	12-2-86
G	ADDED DIM 3.8	CB.	5-4-87
F	ADDED P/N 180908-2	CB.	10-2-87
E	REVISED AND REVISION	CB.	16-9-76
REV	REVISION RECORD	DR	CHK

© 1975 BY AMP INCORPORATED ALL RIGHTS RESERVED. AMP PRODUCTS COVERED BY PATENTS AND OR PATENTS PENDING

CUSTOMER COPY  
REFERENCE ONLY

MATERIAL AND FINISH  
SEE TABLE



AMP ITALIA  
VIA CERCHI 15  
COLLEGNO (TORINO)

CLASS  
250 SERIES

WIRE RANGE INSULATION TYPE

TOLERANCE EXCEPT AS NOTED  
ANGLES 45° ± 0.1°

SCALE  
2:1

LOC  
I

NO  
A

NO  
C-180908

REV  
L

2 WAY FAST-ON TAB HOUSING